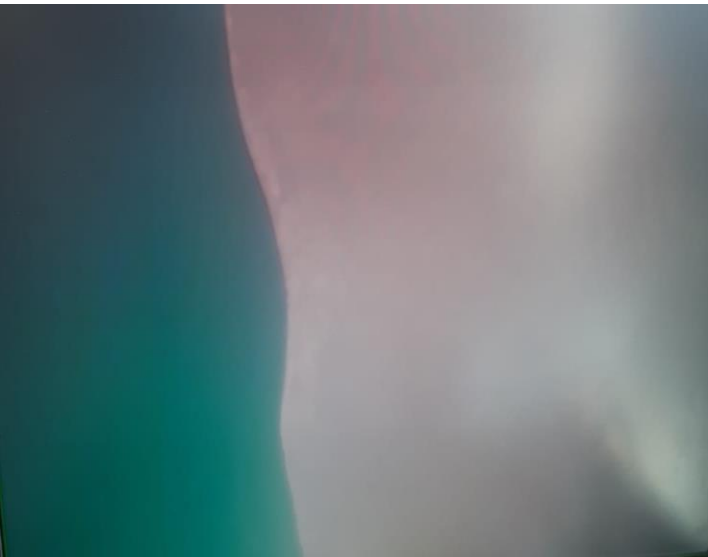
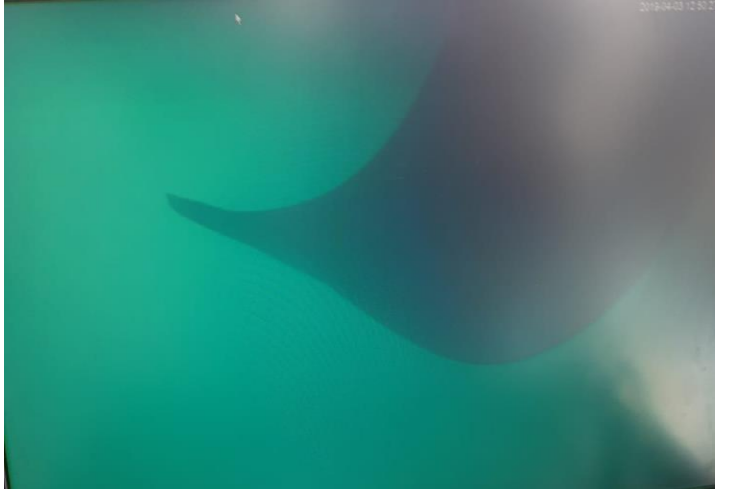
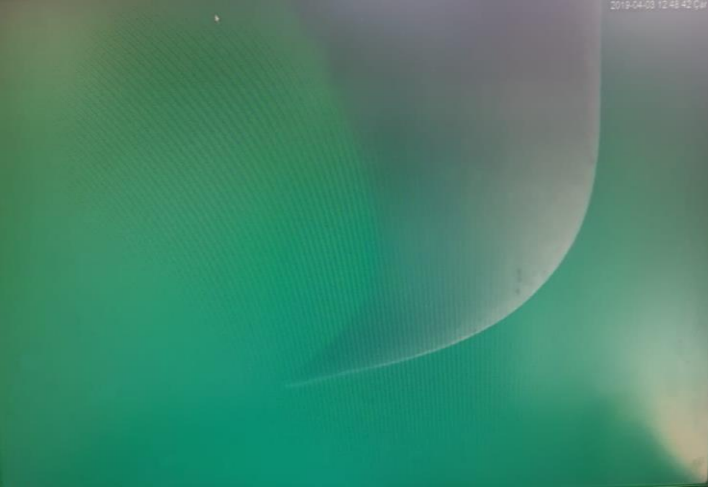
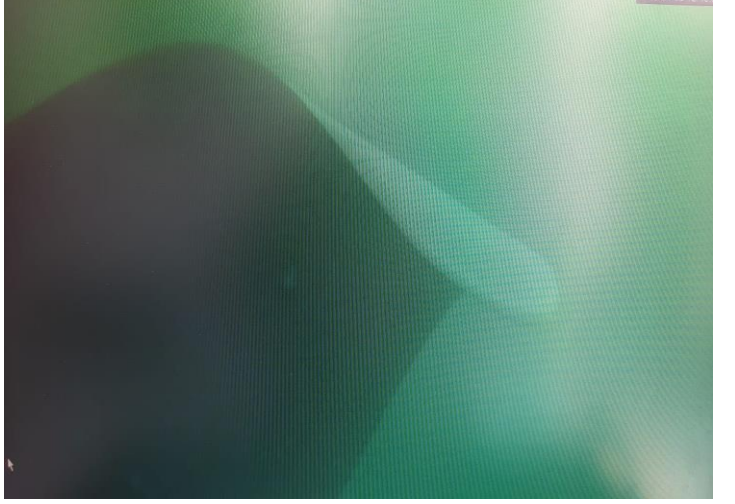
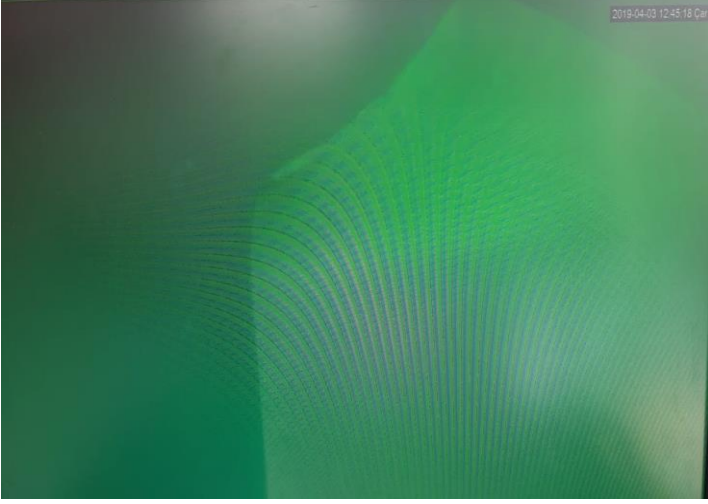
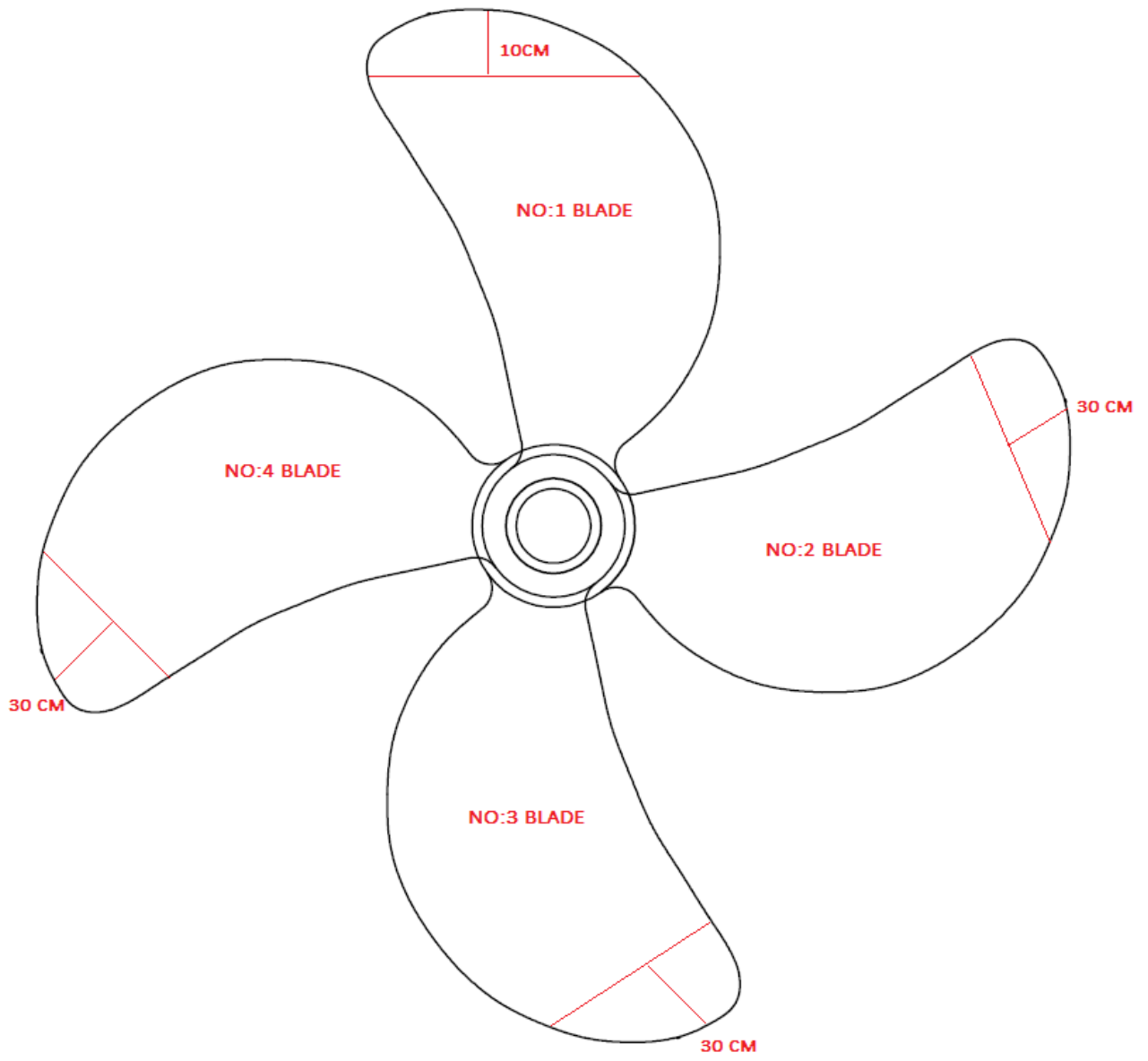


EĐİK KANATLAR VE KIRIK KANAT

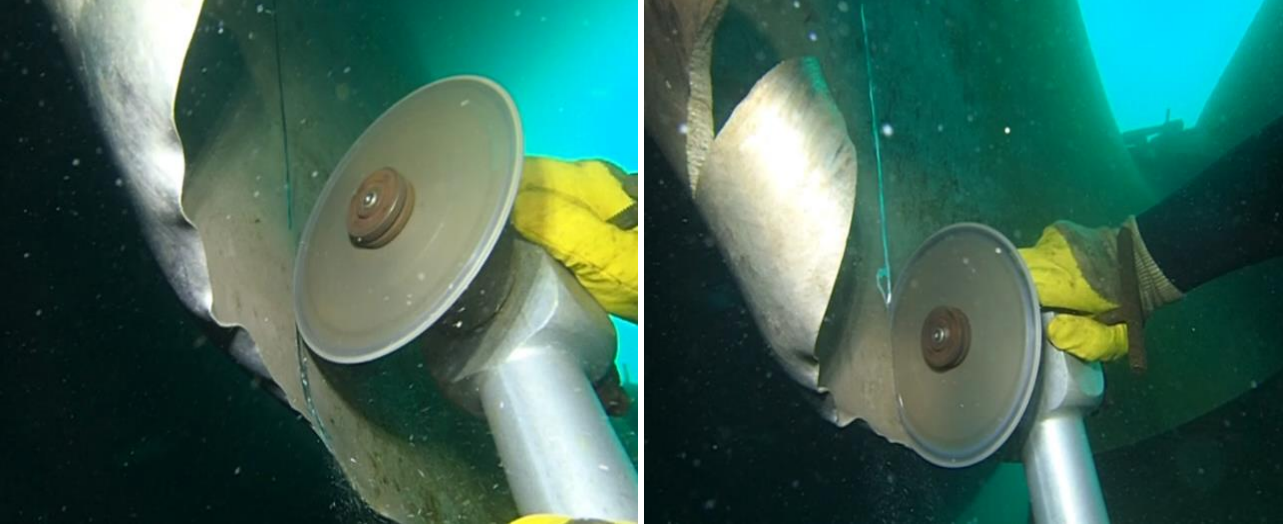
BENDED BLADES AND BROKEN BLADE





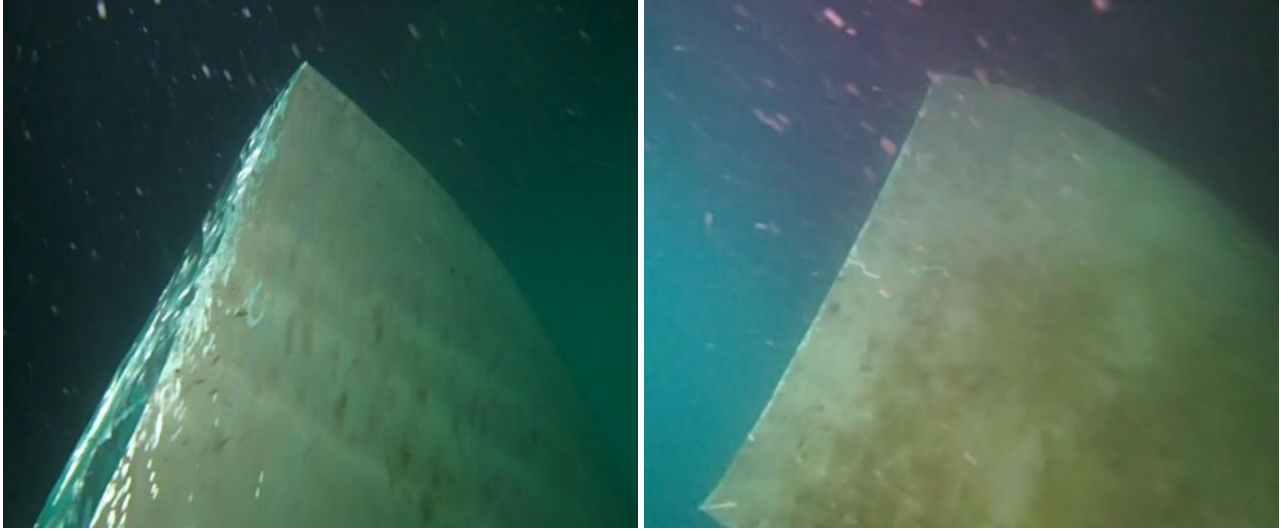
KESİM SÜRECİ

CUTTING PROCESS



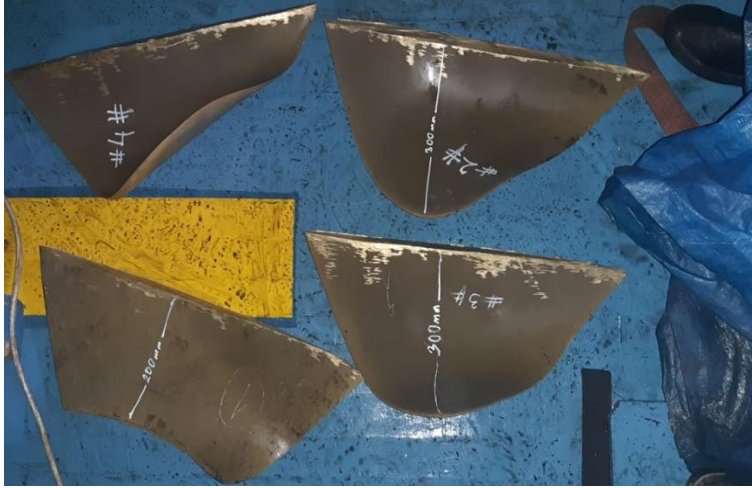
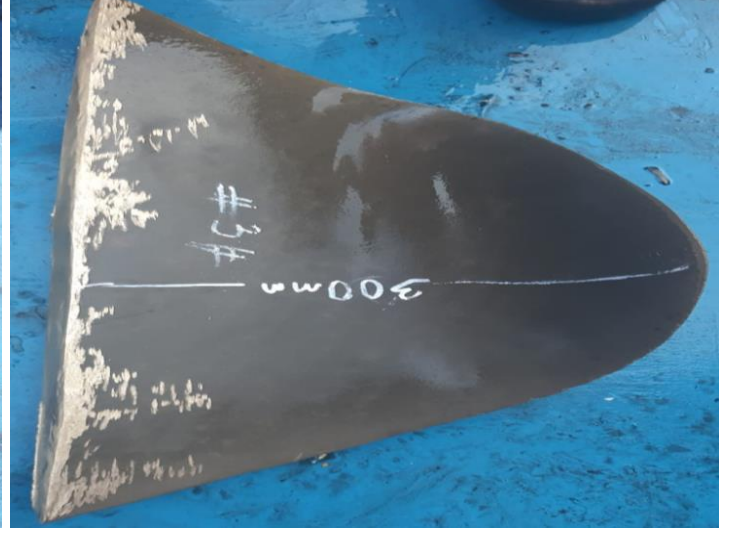
KESİM SONRASI

AFTER CUTTING



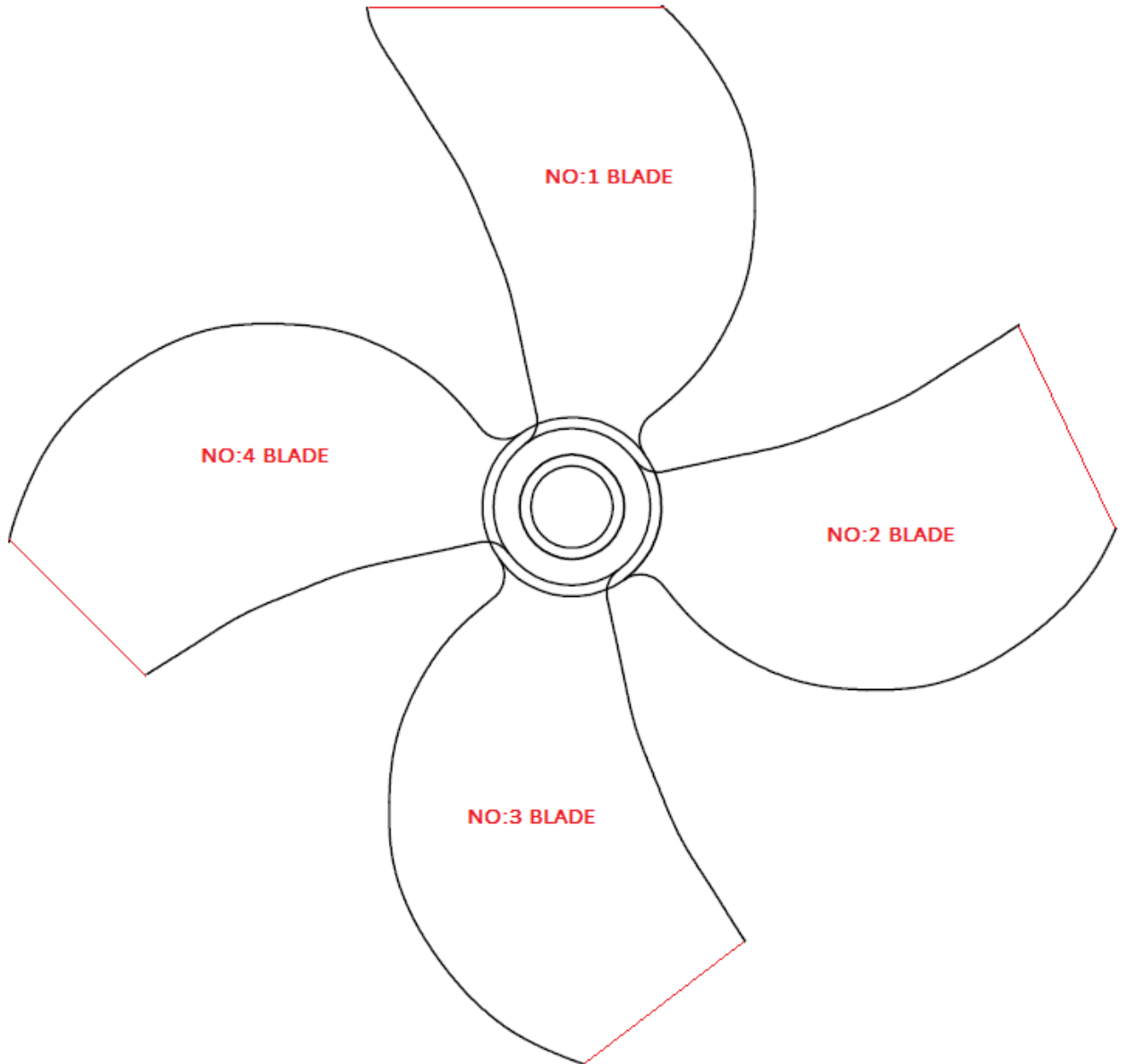
KESİLEN TÜM PERVANE KANATALARININ KARADAKİ HALİ

CUTTED CONDITION OF ALL PROPELLER BLADES (ON LAND)



PERVANE SON HALI

LAST CONDITION OF PROPELLER



AÇIKLAMA

REFERENCE

PERVANE KESİM İŞLEMİ; KLAS KURULUŞUNUN BELİRTTİĞİ ŞEKİLDE, PROSEDÜRE UYGUN OLARAK VE KLAS GÖZETİMİNDE YAPILMIŞTIR.

THE PROPELLER CUTTING PROCESS BEEN DONE IN ACCORDANCE WITH PROCEDURE AS THE CLASS ESTABLISHMENT MENTIONED AND IN THE PRESCENCE OF CLASS SURVEYOR.